



Technical Specifications

Accuracy:	< ±2% of FS range under constant conditions
Analysis:	0-100% oxygen
Application:	Verify ambient O ₂ levels of confined spaces
Calibration:	Certified dry 100% oxygen or air after 8 hrs of use
Compensation:	Temperature
Connections:	1x16 mm thread (see options below)
Controls:	Soft touch keypad for ON/OFF and Calibration
Dimensions:	2.72" x 4.1" x 1.35"; weight 7 oz. (196 grams)
Display:	3 digit LCD 1.1" x .625"; resolution 0.1% O ₂
Flow Sensitivity:	None between 0.2 to 10 liters per minute
Humidity:	Non-condensing 0-95% RH
Linearity:	± 1% under constant conditions
Pressure:	Inlet - ambient or regulated; vent - atmospheric
Power:	(2) 1.5V AA alkaline batteries; 13,000 hrs of use
Response Time:	90% of final FS reading in 10 seconds
Sensitivity:	< 0.5% of FS range
Sensor:	AII-11-75-PO2
Sensor Life:	32 months in air at 25°C and 1 atmosphere
Storage Temp.:	-20° to 60°C (-4°F to 140°F) on intermittent basis
Temp. Range:	5° to 45°C (41°F to 113°F)
Warm-up Time:	None
Warranty:	12 months analyzer; 12 months sensor

NEW

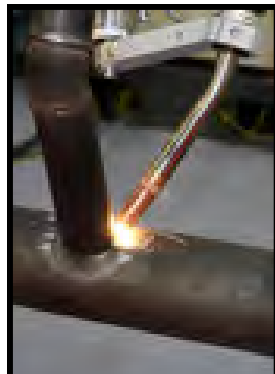


Options & Accessories

- AII-11-75-PO2R Remote Oxygen Sensor Kit
- A-3676-1 Hand Pump Kit
- A-3388 Adapter, Dome to Sensor
- A-3609 Adapter, 1/8" Tube to Dome
- A-3676 Adapter, 1/8" Tube to Sensor
- FITN-1009 Tee Adapter
- FITN-1112-1 Flow Diverter
- HRWR-1157 Screwdriver
- HRWR-1158 Lanyard
- PUMP-1020 Hand Pump
- TUBE-1018 Tubing, 1/8" x 3'
- A-3657-1 Dovetail Mounting Kit
- HRWR-1075 Dovetail Clamp Pole or Shelf

**Palm O₂
Oxygen Analyzer**

- Easy user interface . . . one touch controls
- Simple to use . . . accurate reliable results
- One touch calibration . . . 100% O₂ or air
- Long battery life . . . 13,000 hrs of use
- Advanced sensor technology
- Internal or external sensor configurations
- State of the art electronics
- Certified ISO 9001:2008 QA System



ISO 9001:2008 Certified
INTERTEK Certificate No. 485





Palm O₂ **Oxygen Analyzer**

NEW

- Easy user interface . . . one touch controls
- Simple to use . . . accurate reliable results
- One touch calibration . . . 100% O₂ or air
- Long battery life . . . 13,000 hrs of use
- Advanced sensor technology
- Internal or external sensor
- State of the art electronics
- Certified ISO 9001:2008 QA System



Applications

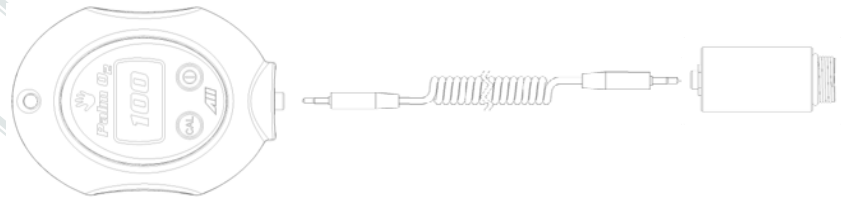
- Personnel Safety
- Area Monitoring
- O₂ Deficiency Confined Spaces
- Check Breathing Air Tanks
- Confirm O₂ Levels Prior to Weld

For added flexibility select from the standard configuration with integral oxygen sensor or the optional remote sensor . . .

either way there is a variety of sampling options available to meet your need.

Optional Accessories

Palm O2 R Oxygen Analyzer, Remote Oxygen Sensor



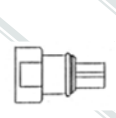
Oxygen Analyzer with A-3654 Remote Sensor Connector

CABL-1009 Cable 6 ft. Phone Plug with Lock Nut

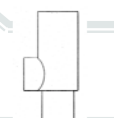
AII-11-75-PO2R I/W Oxygen Sensor



A-3388 Adapter, Dome to Sensor



FITN-1112-1 Flow Diverter



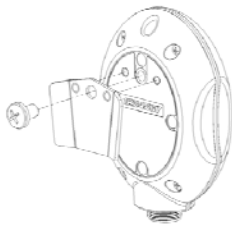
FITN-1009 Tee Adapter

HRWR-1157 Screwdriver

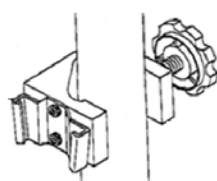
HRWR-1158 Lanyard

Temporary Mounting in a Fixed Location:

A-3657-1 Dovetail Mounting Kit



A-3657 Dovetail Bracket
HRWR-1162 Screw 1/4-20 x 3/8"



HRWR-1075 Dovetail Clamp Pole or Shelf

A-3692 Hand Pump Kit



A-3674 Adapter 5/16" Tube to Sensor

PUMP-1020 Pump, Hand

TUBE-1020 Tubing, 5/16" x 3' (2x pcs)



A-3676 Adapter, 1/8" Tube to Sensor



TUBE-1018 Tubing, 1/8" x 3'



A-3609 Adapter, Dome to 1/8" Tube