



Technical Specifications *

Accuracy:	< 1% of FS range under constant conditions																
Analysis:	0-100 ppb, 0-1 ppm, 0-10, 0-100 ppm FS ranges; auto-ranging or manually lock on single range																
Application:	Analyze oxygen from 0.5 ppb to 100 ppm in ultra-high purity inert process He and H ₂																
Area Classification:	General purpose																
Alarms:	2 adjustable form C relay contacts non-latching; "weak sensor" indicator; power failure; system failure																
Calibration:	Certified gas of O ₂ balance N ₂ approximating 80% of range above analysis range recommended for optimum																
Compensation:	Barometric pressure and temperature; heated sample system and sensor housing																
Connections:	Sample and span inlets - 1/4" VCR fittings; air inlet and vent - 1/4" compression tube fittings																
Controls:	Water resistant keypad; menu driven range selection, calibration, alarm and system functions																
Data Acquisition:	Selectable data point intervals																
Display:	Graphical LCD 5 x 2.75; resolution 0.5 ppb; displays real time ambient temperature and pressure																
Enclosure:	Painted aluminum 13.9" x 9.9" x 13.4" benchtop																
Flow Sensitivity:	None between 1-3 SCFH, 1 SCFH recommended																
Linearity:	> .995 over all ranges																
Pressure:	Inlet - regulate to 20-50 psig, max 150 psig; vent - atmospheric not to exceed ± 5 " water column																
Power:	Specify 100/120 or 220/240 VAC																
Recovery Time:	<table border="0"> <tr> <td>O₂ Level</td> <td>Duration</td> <td>O₂ Target</td> <td>Recovery on N₂</td> </tr> <tr> <td>9 ppm</td> <td>1 minute</td> <td>10 ppb</td> <td>15 minutes</td> </tr> <tr> <td>9 ppm</td> <td>1 minute</td> <td>1 ppb</td> <td>60 minutes</td> </tr> <tr> <td>1 ppm</td> <td>5 minutes</td> <td>1 ppb</td> <td>30 minutes</td> </tr> </table>	O ₂ Level	Duration	O ₂ Target	Recovery on N ₂	9 ppm	1 minute	10 ppb	15 minutes	9 ppm	1 minute	1 ppb	60 minutes	1 ppm	5 minutes	1 ppb	30 minutes
O ₂ Level	Duration	O ₂ Target	Recovery on N ₂														
9 ppm	1 minute	10 ppb	15 minutes														
9 ppm	1 minute	1 ppb	60 minutes														
1 ppm	5 minutes	1 ppb	30 minutes														
Response Time:	90% of final FS reading < 60 seconds																
Sample System:	Manual pressure regulation, flow control and indicator. Pneumatic (minimum 80 psig air supply) valves control sample and span gas inlets, bypass and isolation of sensor, and, integral zero gas system. Electro-polished tubing with orbitally welded or VCR connections.																
Sensitivity:	< 0.5% of FS range																
Sensor Model:	GPR-13-2000UHP - requires no maintenance																
Sensor Life:	15 months at 25°C and 1 atm; average O ₂ < 10 ppm																
Signal Output:	4-20mA isolated and 0-1V																
Temp. Range:	5° to 45°C																
Warranty:	12 months analyzer; 12 months sensor																
Wetted Parts:	316L stainless steel																

Optional Equipment

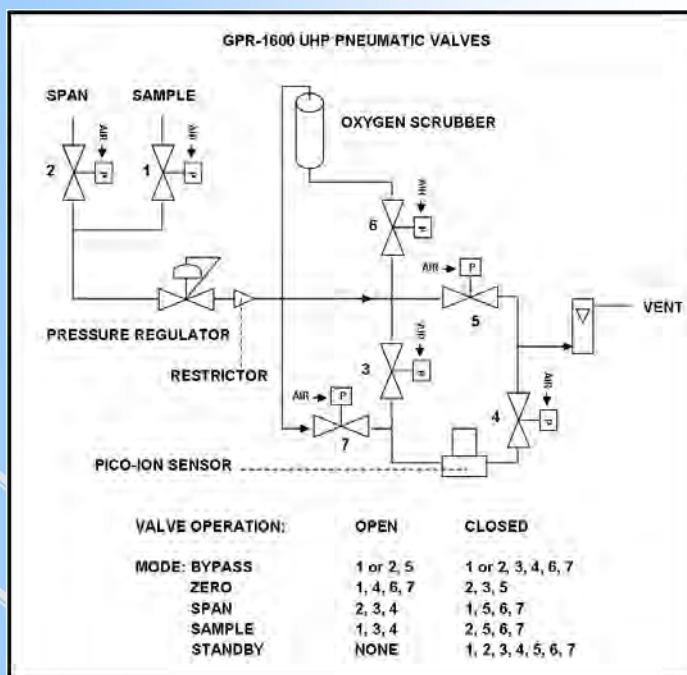
- GPR-1600 UHP-B Delete integral zero gas system (see other side)
- GPR-1600 UHP-M Manual valves, delete zero gas system (see other side)
- Bezels for panel and 19" rack mounting; wall mount NEMA4X enclosure

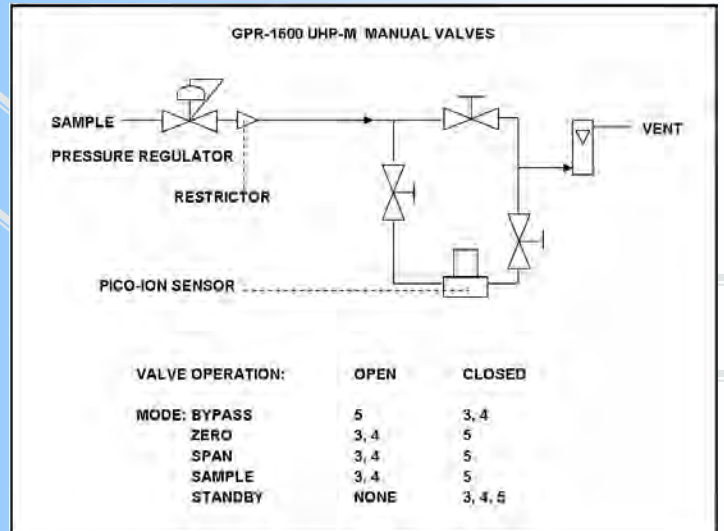
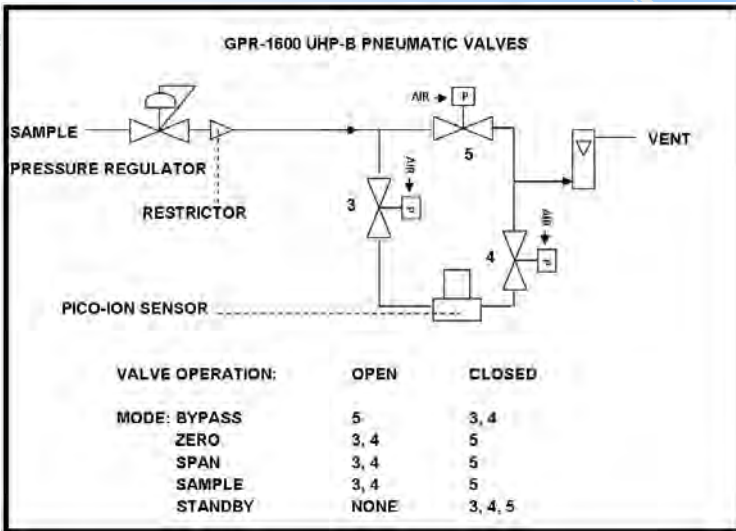
* Specifications subject to change without notice

GPR-1600 UHP ppb Oxygen Analyzer



Breakthrough Pico-Ion™ Sensor
Sensitivity <0.5 parts-per-billion
Orbitally Welded Sample System
Fast Recovery from Upset Excursions
Fully Automatic Menu Driven Controls
Remote Communication via USB





The Pico-Ion oxygen sensor represents the first real advancement in sensor technology in decades.

The sensor is the heart of any analyzer ... which means sensor technology is the critical factor in analyzer performance ... don't settle, get the best !

Advancements:

- Increased signal output
- High signal to noise ratio
- Maximize O₂ reaction rate
- Compact design
- Low cost of ownership

Performance:

- Sensitivity (LDL) <0.5 ppb
- Accuracy <±1%
- Stability <1% drift / mo.
- Fast recovery from O₂
- 15-36 month life
- No maintenance

